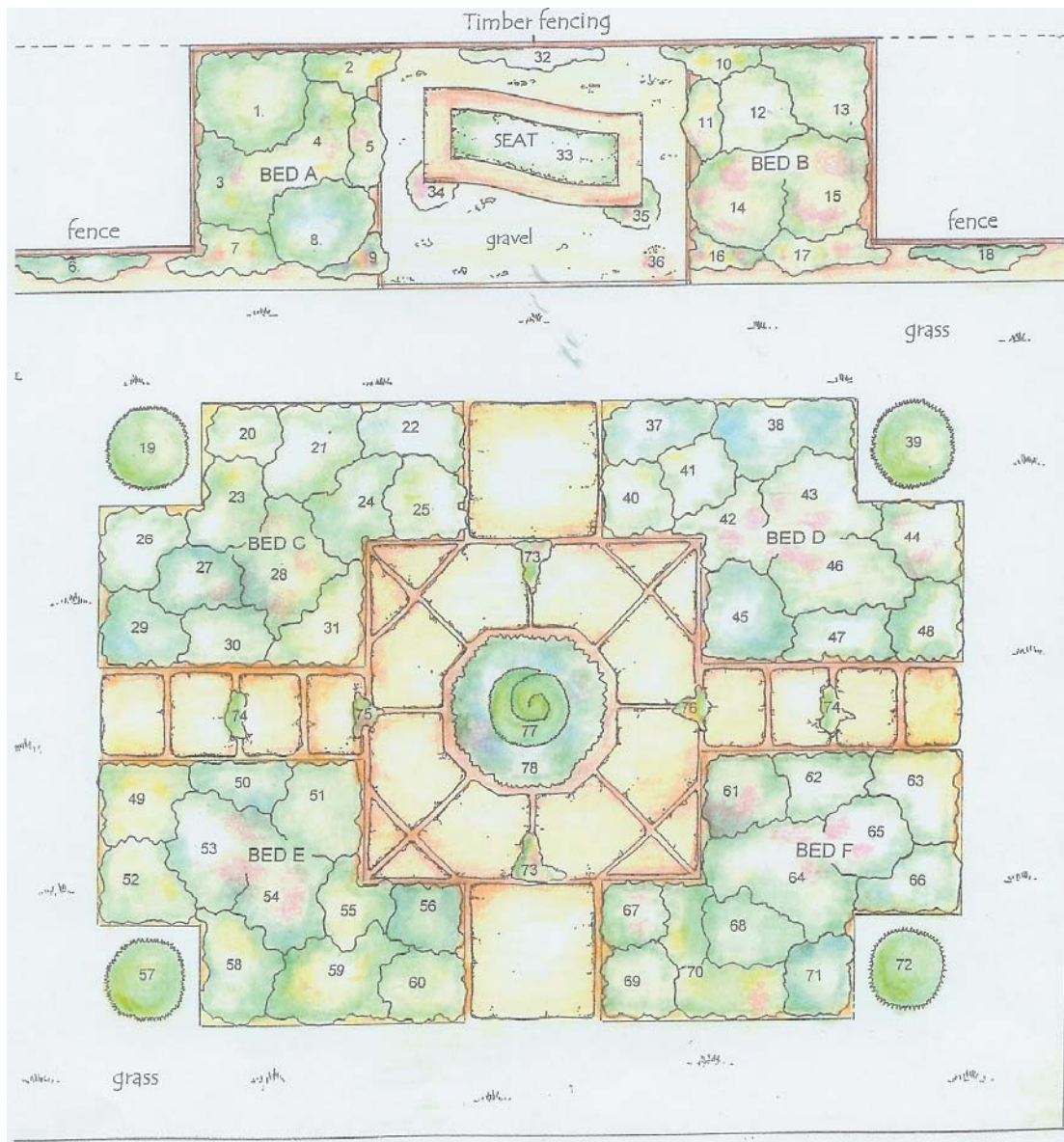


# Great Garden Challenge – Channel 4 TV 2005

## “A garden of Herbal Tranquillity”

Designed by Cheryl Waller for the Herb Society

### Plan



### Planting list

#### Bed A

1. Angelica – *Angelica archangelica*
2. Nasturtium ‘African Queen’ – *Tropaeolum majus* ‘African Queen’
3. Fennel – *Foeniculum vulgare*
4. Salisfy – *Tragopogon porrifolius*
5. Marjoram – *Origanum vulgare*

6. Olive espalier – *Olea* var. 'Leccio'
7. Wild Strawberry – *Fragaria vesca*
8. Lavender French 'Pretty Polly' – *Lavandula stoechas* 'Pretty Polly'
9. Heartsease – *Viola tricolor*

#### Bed B

10. Nasturtium 'African Queen' – *Tropaeolum majus* 'African Queen'
11. Marjoram – *Origanum vulgare*
12. Valerian – *Valeriana officinalis*
13. Bay - *Laurus nobilis*
14. Lavender 'Munstead' – *Lavandula angustifolia* 'Munstead'
15. Tree Spinach – *Chenopodium giganteum*
16. Heartsease – *Viola tricolor*
17. Wild Strawberry – *Fragaria vesca*
18. Olive espalier – *Olea* var. 'Leccio'

#### Bed C

19. Box topriary – *Buxus sempervirens*
20. Parsley – *Petroselinum crispum*
21. Lemon Balm – *Melissa officinalis*
22. Indian Mint – *Satureja douglasii*
23. Chives - *Allium schoenoprasum*
24. Lavender French – *Lavandula stoechas provencal*
25. Thyme 'Dark Eyes' – *Thymus* 'Dark Eyes'
26. Origanum 'Country Cream' – *Origanum vulgare* 'Country Cream'
27. Sage – *Salvia officinalis* 'Purpurascens'
28. Bronze Fennel – *Foeniculum vulgare* 'Purpureum'
29. Pennyroyal – *Mentha pulegium*
30. Feverfew – *Tanacetum parthenium*
31. Thyme 'Goldstream' – *Thymus serpyllum* 'Goldstream'

#### Gravel area planting

32. Climbing Rose 'Maigold' – *Rosa* 'Maigold'
33. Chamomile 'Treneague' - *Chamaemelum nobile* 'Treneague'
34. Thyme 'East Lodge' – *Thymus* 'East Lodge'
35. Thyme 'Bressingham Pink' – *Thymus* 'Bressingham Pink'
36. Houseleek – *Sempervivum tectorum*

#### Bed D

37. Catmint 'Mussinii' – *Nepeta racemosa* 'Mussinii'
38. Prostrate Rosemary – *Rosmarinus officinalis* Prostratus Group
39. Box Topriary – *Buxus sempervirens*
40. Thyme Purple Beauty – *Thymus vulgaris* 'Purple Beauty'
41. Chives White – *Allium schoenoprasum* 'Silver Chimes'
42. Red Veined Dock – *Rumex sanguineus*
43. Sweet Rocket – *Hesperis matronalis*
44. Painted Sage – *Salvia viridis*
45. Thyme 'Silver Posie' – *Thymus vulgaris* 'Silver Posie'
46. Lavender 'Rosea' – *Lavandula angustifolia* 'Rosea'
47. Artemisia 'Silver Queen' – *Artemisia ludoviciana* 'Silver Queen'

48. Wall Germander – *Teucrium x chamaedrys*

#### Bed E

49. Lemon Balm variegated – *Melissa officinalis* ‘Aurea’
50. Good King Henry – *Chenopodium bonus-henricus*
51. Lemon Thyme – *Thymus x citriodorus*
52. Roman Chamomile – *Chamaemelum nobile*
53. Moroccan Mint – *Mentha spicata* var. *crispa* ‘Moroccan’
54. Rosemary – *Rosmarinus officinalis*
55. Caraway – *Carum carvi*
56. Common Thyme - *Thymus vulgaris*
57. Box Topiary – *Buxus sempervirens*
58. Golden Curly Oregano – *Origanum vulgare* ‘Aureum Crispum’
59. Marigold - *Calendula officinalis*
60. French Oregano – *Origanum x onites*

#### Bed F

61. French Thyme – *Thymus vulgaris* ‘French’
62. Coriander – *Coriandrum sativum*
63. Compact Oregano – *Origanum vulgare* ‘Compactum’
64. Sage ‘Bergatten’ – *Salvia* ‘Bergatten’
65. Sage fruit scented – *Salvia elegans*
66. Variegated Figwort – *Scrophularia nodosa variegata*
67. Thyme ‘Kurt’ – *Thymus vulgaris* ‘Kurt’
68. French Tarragon – *Artemisa dracunculus*
69. Golden Oregano – *Origanum vulgare* ‘Aureum’
70. Nasturtium ‘Alaska’ – *Tropaeolum majus* ‘Alaska’
71. White French Lavender – *Lavandula stoechas leucantha*
72. Box Topiary – *Buxus sempervirens*

#### Central paved area planting

73. Thyme ‘Bressingham Pink’ – *Thymus* ‘Bressingham Pink’
74. Thyme Woolly – *Thymus pseudolanuginosus*
75. Creeping Red Thyme – *Thymus* var. *Coccineus*
76. Thyme Orange Spice – *Thymus* ‘Orange Spice’
77. Box Topiary Spiral – *Buxus sempervirens*
78. Lavender French ‘Papillon’ – *Lavandula stoechas* ‘Papillon’

#### The Herb Society

Sulgrave Manor, Sulgrave, Banbury, OX17 2SD, UK

Phone: 01295 768899

Email: [info@herbsociety.org.uk](mailto:info@herbsociety.org.uk)

Web site: [www.herbsociety.org.uk](http://www.herbsociety.org.uk)